



# LOCAL GOVERNMENT GEOSPATIAL ALLIANCE

# LGGA NEWSLETTER

## WHAT'S INSIDE THIS ISSUE:

Gill reflects on the last LGGA meeting

The value of Open Data Portals

Call for more open data

Recognising geospatial excellence

National Elevation Project

The Geospatial Symposium

Brainteaser

## UPCOMING EVENTS

Explore LiDAR Elevation Data | 13 Nov | [More info here...](#)

GIS Day | 14 Nov | [More info here...](#)

Geospatial Symposium | 17 Nov | [More info here...](#)

Geography is Everywhere | 18 Nov | [More info here...](#)



## Our new website is live and full of geospatial goodies

Written by Gill Lawrence

If you haven't already visited the LGGA's refreshed website then you are missing out!

A major part of our engagement and communications strategy this year involved creating a modern website where users and member can stay up to date with geospatial events, career opportunities and news. We have also created a space to share reusable geospatial resources such as document templates, scripts, and best practice guidelines. Currently in our GIS toolbox we have:

- Sql functions and procedures
- Drone guidelines
- Business continuity plan
- Releasing council geo data

Recent news articles on our website include news about the [Provincial Growth Fund](#) investing in an expansion of 3D mapping to support major development projects and the [NZ Institute of Survey and Spatial \(NZIS\)](#) ambitions to introduce a professional certification for spatial practitioners in New Zealand.

If you looking for posts prior to June 2018, simply head over to our archived site, but remember to go to [www.lgga.org](http://www.lgga.org) for all the latest updates.



# Reflections from the most recent LGGA meeting

by Gill Lawrence

## Welcome

We welcomed Jason MacDonald from Otago as our latest representative to the LGGA. It's good to have someone representing Otago, we are still seeking delegates for Taranaki, Nelson, Tasman and Marlborough. If you know someone from these areas who might like to join the team, please pass on our details or email us at [LGGAComms@gmail.com](mailto:LGGAComms@gmail.com).

## Update

The LGGA met online in September. Our meeting covered the following:



## Keeping our content fresh and relevant

We want to keep the website content fresh and abundant with resources and useful information. Given this, we would like to invite you to share your stories and reusable resources so that we can all benefit from it. Email your suggestions through to [LGGAComms@gmail.com](mailto:LGGAComms@gmail.com).

## NZAM's archive of aerial photos

LINZ is starting to think about how best to leverage the treasure trove of NZAM archive of aerial photos. This is another collection separate from the Crown archive that are being scanned, refer to the [LGGA Historical Imagery Project](#) on the LGGA website for more information.



LINZ is seeking assistance and funding from the LGGA to scan the imagery archive. Some regions are already backing the initiative, but more support is needed. We would like to hear from you if you might be interested in advancing this project.

## How might councils use satellite imagery

A few councils are investigating how best to use satellite imagery. An idea was proposed for the LGGA to work together with them to identify ways councils could use and benefit from using satellite data. The LGGA representatives will discuss this in more detail at our meeting in December. Please get in touch with [Iain Champion](#) or [Gill Lawrence](#) to express your interest in this initiative.

## Better sharing of elevation data

LGGA is considering ways in which elevation data that is not available on the LINZ data portal, but useful to others, could be disseminated. This idea will also be considered further and discussed at the next meeting.

*More later folks!*



# The value of an open data portal

by Lidia van Kruiningen

Over the past few years, the way government organisations share their data has changed greatly. Many councils have started to publish data online for everyone to see. By doing this, companies can improve government transparency, increase innovation plus reduce the costs of accessing and sharing data. Most of the data that councils hold today is of a geospatial nature which makes uncovering open data portals even more important.

Here are a few companies across New Zealand that have already implemented open data portals:

## Canterbury Maps

Canterbury Maps is a public geospatial site that allows anyone to access the region's local government data. It is managed by the nine district councils plus Environment Canterbury. The [open data portal](#) found on this website has improved data sharing across Canterbury and reduced the workload for GIS staff as their customers can self serve rather than make a manual request for data. Customers are able to access data such as information on water quality, wells, consenting and much more.

## Wellington City Council

Wellington City Councils portal holds information related to business,

elections, planning and education

## Auckland Transport

Auckland Transport makes roading, walking paths, cycleways and public transport data available for public use. It allows users to preview the data before downloading and it can also be accessed via API REST endpoints.

## Marlborough District Council

Marlborough District Council has an open data portal that holds data related to biosecurity, recreation and demographic information.

## Ministry for the Environment (MfE)

MfE has an open data portal that uses the Koordinates platform. Users are also able to preview and download the data in multiple formats. Additional links to documentation and other tools have proven to be helpful for users.

## Auckland Council

The Auckland Council open data portal has over 50 datasets available for download. The site links users to other portals with related datasets such as AT, Retrolens, Watercare and portals such as LINZ Data Service which hosts the councils larger geospatial datasets such as the aerial imagery and Lidar.

“  
**The use of open data sites is greatly underused. Considering the amount of time and effort that goes into maintaining this data, the goal is to make audiences more aware of these portals.**  
 ”

- Other portals:**
- [LINZ Data Service](#)
  - [Open Topography](#)
  - [data.govt.nz](#)
  - [NZ Transport Agency Open Data](#)
  - [Open Access to Ocean Data](#)
  - [Retrolens](#)
- If you know of other portals, please email us at [lgganewzealand@gmail.com](mailto:lgganewzealand@gmail.com). We will publish the list to the LGGA website as a resource.



## What data could you release?

by Paul Stone

When I recently met with some of the Waikato councils to discuss open data, we talked about the type of data that people, business and other groups may find helpful for councils to consider releasing. We know that there is a great demand for spatial data related to physical infrastructure, facilities, reserves, special zones, dog parks and roading assets such as signage, speed zones, bridges and tunnels. Therefore, we continue to champion the cause to release data and allow citizens and business to create and build innovative solutions to the issues we face today, like housing and traffic congestion. One such solution is the free Access Aware application.

### Uses of free data include

- Help with disaster preparedness
- Add value to other services
- Aid the development of tools such as Access Aware

### The call for more data to be open

Access Aware is a free application developed in partnership with CCS Disability, SaferMe (previously known as ThunderMaps), Wellington and Christchurch City Councils.

This application is an example of how the lack of available data can be a roadblock to success. As a promising pilot application, we seeking nationwide data to realise its full value.

### Related information:

 [Free Access Aware](#)

## Full-Day Geospatial Careers Symposium

by Callum Smith



The Emerging Spatial Professionals are organising a **Full-Day Geospatial Careers Symposium** for 17th November. The event is aimed at students as well as young professionals at various stages of their career. It is also timed to be just after the end of the academic calendar to engage with those that are completing their studies and beginning to look to the industry for their first professional job.

Speakers will cover a range of topics to suit everyone from “How to write a good GIS CV” to “How to know when you’re ready to take on leadership responsibilities in the spatial industry”. The event will cater to a variety of individuals with not only spatial, surveying, IT, and geography backgrounds at university but also to working professionals in the mid stages of their spatial career.



The event will be one of ESP’s biggest to date and anticipated to draw an audience of over 100 attendees. Auckland University of Technology has generously offered their facilities to be used as a venue for the event. We have a number of public and private organisations signed up as sponsors and exciting speakers planned, including Ana Krpo, Geospatial Manager at Auckland Council and Rebecca Strang, President of Survey Spatial New Zealand.

We’re also currently seeking lightning talk proposals for the event from attendees with the winning lightning talk receiving a ESRI 3 Day Instructor Led Training Course from Eagle Technology valued at \$2250!

If you’re interested in the event then register on [Eventbrite](#) today and if you’re interested in proposing a lightning talk get in contact through: [emergingspatialpros@gmail.com](mailto:emergingspatialpros@gmail.com).



## Recognising geospatial excellence

by Lidia van Kruiningen

The New Zealand Spatial Excellence Awards are held every year to celebrate the innovation and excellence in the geospatial community. This year, we wish to acknowledge a particular winner - Christchurch City Council won the Spatial Enablement Award for transforming the way spatial data is used in the council. Read more about this project below.

### Spatial Enablement - Christchurch City Council

Christchurch City Council (CCC) has been working on increasing the use of spatial tools throughout the organisation. In 2017, the spatial environment was upgraded to allow staff to create and share their own spatial applications without having to go through the GIS team for assistance. This meant that staff were able to collaborate more efficiently, make better decisions about projects, increase time efficiency, save money and become more mobile based. With the increased use of spatial throughout the organisation, users are now more aware and take ownership for the data as they now appreciate and trust the data.

An example of this spatial project at work is the 'Snap Send Solve' app that was developed to pinpoint certain issues around the city such as graffiti and potholes. The process to do this used to be slow, as the public would send in emails that would then have to be filtered into the work request system. By adding spatial awareness into this process, it cuts the time down significantly as contractors now have an exact locations, plus pictures and descriptions about the issue.

Putting spatial technology in the hands of the business cuts down on time and increases productivity and efficiency.

### CCC application video

We would also like to congratulate Wellington Water, New Plymouth District Council and Auckland Council for their spot in the finals. Read more about these finalists below.

### Professional of the Year: Rory McPhearson, Wellington Water

Rory McPherson at Wellington Water has helped to develop asset and field collection data, enterprise and ArcGIS Online services across the organisation. As a result of this staff, customers and contractors are using GIS to better collaborate as they now have access to spatial data, services and tools. From this the team have had more time to complete other work and projects.

A public web app was one of the tools created that allows users to access three waters data across Wellington. Alongside this, Rory has also developed Survey123 and Collector apps that remove the once used paper maps and forms used by field staff. These apps allow condition assessments to be undertaken on assets around the region, such as commercial water meter readings, trade waste inspections and hydrant condition assessments.

### Rory's application video

### People & Community: New Plymouth District Council

In 2016 - 2017 the New Plymouth District Council worked on creating a digital draft version of the District Plan.

# Recognising geospatial excellence continued...



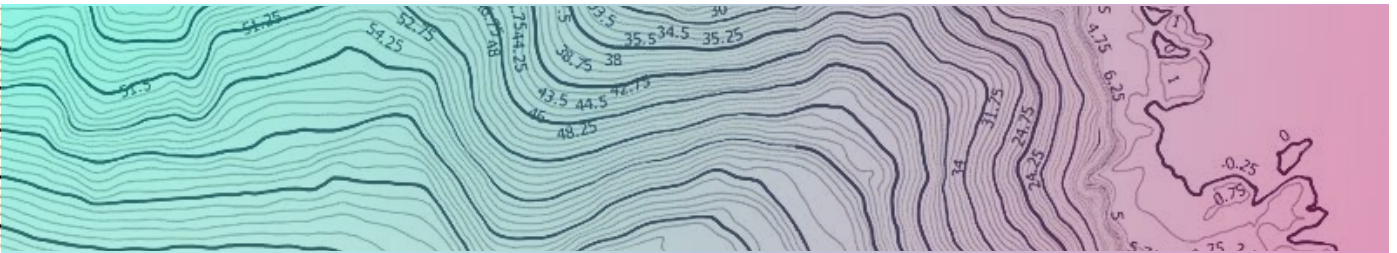
This E-Plan was created together with Isovist to remove paper copies of the District Plan. Users are now able to navigate district plan maps with ease, find zoning information, contextual information, sites of significance etc. The community and key stakeholders were engaged at every step along the projects development which meant the end product was truly fit for purpose. Moving the district plan to digital means customers do not have to spend valuable time looking through many paper maps to find answers. It's all available through the click of a button.

## Technical Excellence - Auckland Council

The Auckland Council Development Capacity Model (AC/DC) was the project that Auckland Council delivered this year. It looks to discover the influence of planning regulations on housing development. A model was developed in two stages to understand the commercial feasibility of implementing the opportunities provided by the new plan. The first stage used housing development costs and sale price information, where stage two built on this by adding in the Greenfields Land Development model. Various datasets related to property and land, construction costs and potential sale prices were obtained by LINZ and the council to run the model. Residual valuation methodology was used in the model to determine what price a developer should pay for a site, taking into account sale prices and development costs.

 [New Plymouth's application video](#)

 [AC application video](#)



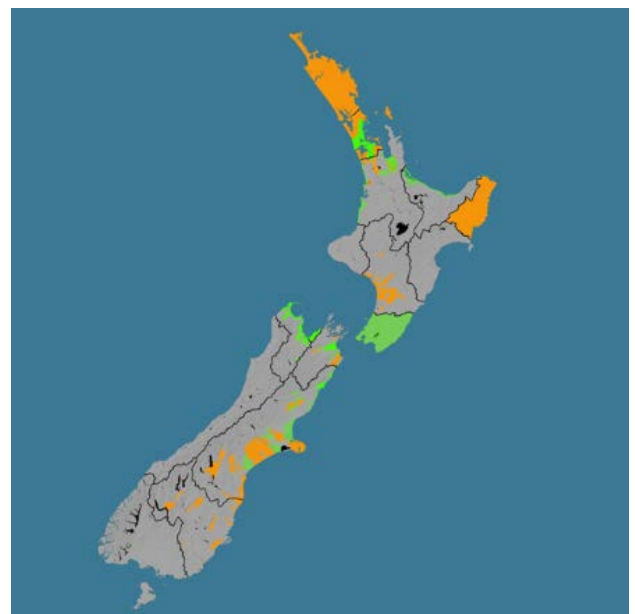
## National Elevation Project

by Bjorn Johns

National elevation data improvement is a priority for Land Information New Zealand (LINZ) and is a significant project within the Mapping New Zealand 2025 initiative. The data is crucial for modelling, policy and decision-making on resilience and climate change, water, urban change, and optimising land use etc. LINZ is interested in working with the co-funding partners on increasing the amount of national coverage, and to discuss opportunities for regional scale LiDAR. This work would include regional and local councils, and central government providing co-funding to allow for data capture at a greater scale than any one agency could afford or justify.

Elevation data that is captured as part of LINZ's role in coordinating national LiDAR is made available through the LINZ Data Service as 1m Digital Elevation Models, and the source point cloud data is available from OpenTopography.

In reference to the map, Nationally consistent LiDAR data is



available for the areas in green, and capture and supply of data from the orange areas is in progress and will be made available in the future. Projects in progress include all of Northland, Auckland and Gisborne regions.

# Acknowledgements



To all our newsletter contributors, thank you so much. Without your contribution the newsletter would not be possible. We appreciate the time you have put aside to write up interesting stories, share ideas and highlight upcoming events.

## Contributors

- Gill Lawrence - Spatial Information Manager, Waikato Regional Council
- Paul Stone - Open Data Programme Leader, NZ Open Data programme
- Lidia van Kruiningen - GIS Technical Support (Canterbury Maps), Environment Canterbury
- Wendy Cyster-Gomwe - Auckland Council, Geospatial Customer Engagement and Communication Advisor
- Bjorn Johns - Geospatial Technical Leader, LINZ
- Callum Smith - Geospatial Consultant, Aurecon

Images were sourced from Unsplash.com.

# Stay in touch



## Contact information

- @ [www.lgga.org](http://www.lgga.org)
- ✉ [LGGAComms@gmail.com](mailto:LGGAComms@gmail.com)



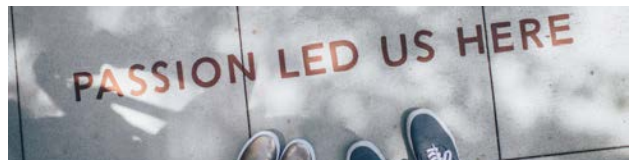
# Time out!

Be in to win a mystery prize when you enter the LGGA Brainteaser Competition. To enter, simply email your answer and the logic behind it to the LGGA inbox at [LGGAComms@gmail.com](mailto:LGGAComms@gmail.com) inbox. Use the subject line **LGGA Brainteaser**. The first correct answer wins the mystery prize.



I have forests but no trees.  
 I have lakes but no water.  
 I have roads but no cars.  
 What am I?

# LGGA representatives



## Canterbury

Iain Campion (Chairperson)  
 Canterbury Regional Council

## Otago

Jason MacDonald  
 Dunedin City Council

## Auckland

Ana Kpro  
 Auckland Council

## Southland

Ingrid Darragh  
 Environment Southland

## Bay of Plenty / Gisborne

Glen Clarkin  
 Bay of Plenty Regional Council

## Waikato

Gill Lawrence  
 Waikato Regional Council

## Hawkes Bay

Diana Paynter  
 Hastings District Council

## Wellington

Sean Audain  
 Wellington City Council

## Horizons

Andre Kruger  
 Palmerston North City Council

## West Coast

Les Gibbs  
 West Coast Regional Council

## Northland

Gail Yearbury  
 Northland Regional Council

## Vacancies

Taranaki, Nelson, Tasman and Marlborough